

Project Synopsis

Provence Estate -Krrish

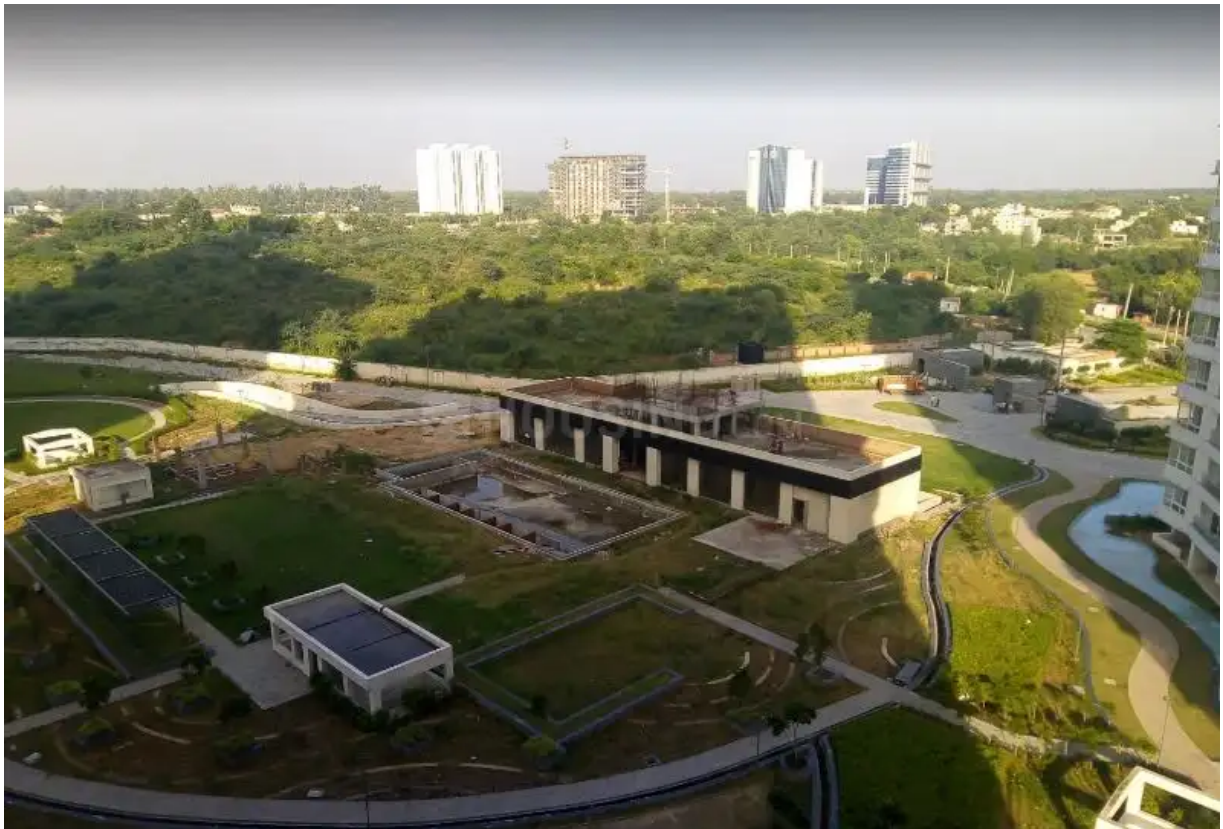
Location: Gwal Pahari, Gurgaon
DTCP License no 105 of 2008 dated 15/05/2008
RERA Registration: 282 of 2017 dated 09/10/2017
Developer Name: Jasmine Buildmart Pvt Ltd

Total Project Land Area: 12.3187 Acres
Total No. of Towers: 4 (A, B, C, D)
Total No of Floors: 24 Floors
Total No of Units: 176

- 2 Units per floor of Salable Area: 5800 Sq Ft
- Penthouse Duplex Units of Salable Area : 10000 Sq Ft



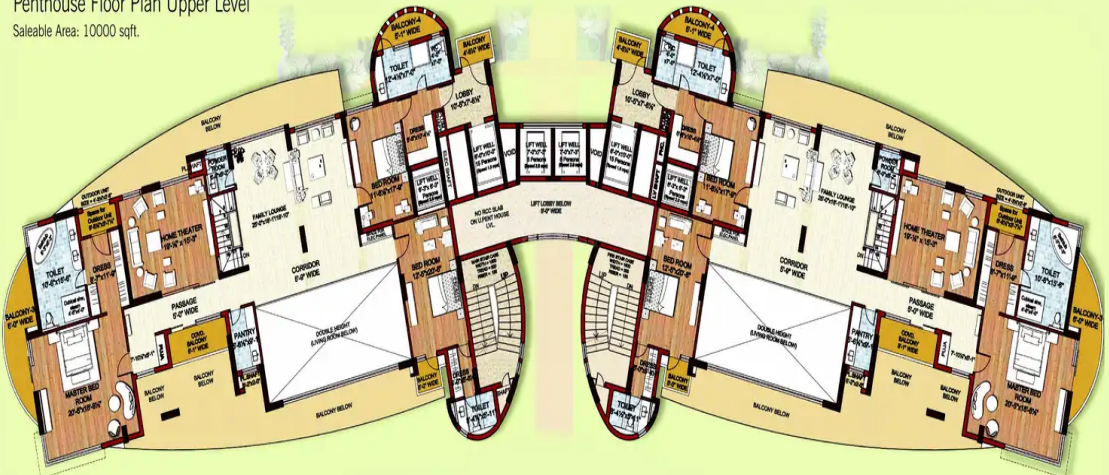




Typical Floor Plan Upper Level
 Saleable Area: 5800 sqft.



Penthouse Floor Plan Upper Level
 Saleable Area: 10000 sqft.



Penthouse Floor Plan Lower Level
 Saleable Area: 10000 sqft.

